

New Elevated Oats Street Station

Oats Street Station will be rebuilt as part of the elevated rail solution to remove the Oats Street level crossing.

The new elevated station will have two station entrances on either side of the road to help provide safe connections for those accessing the bus interchange, South Metropolitan TAFE campus, local aquatic centre and broader community.

How Feedback is Shaping this Station

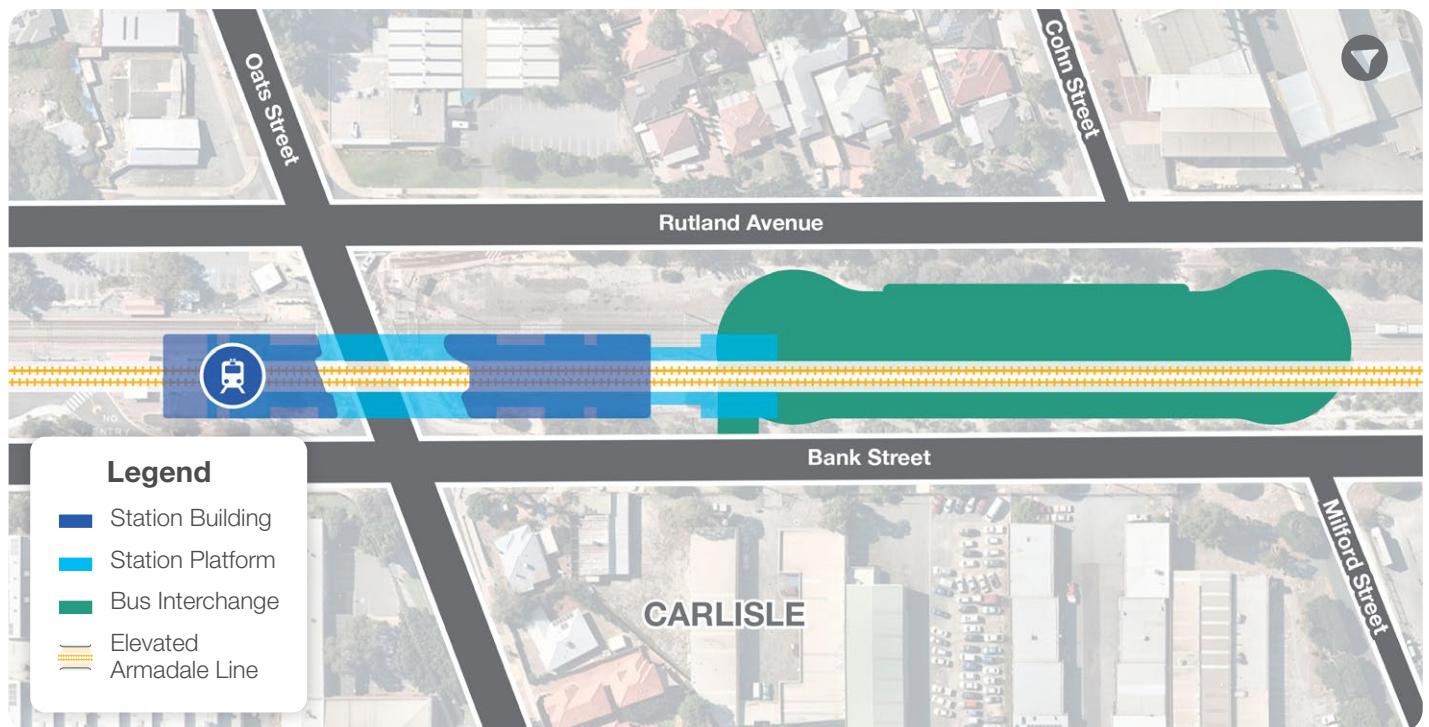


Community and stakeholders suggested having station entrances on either side of Oats Street to reduce how often people had to cross the road to get to train services.

The community also told us it is important to add greenery and shade and enhanced links to employment areas and the surrounding neighbourhood.

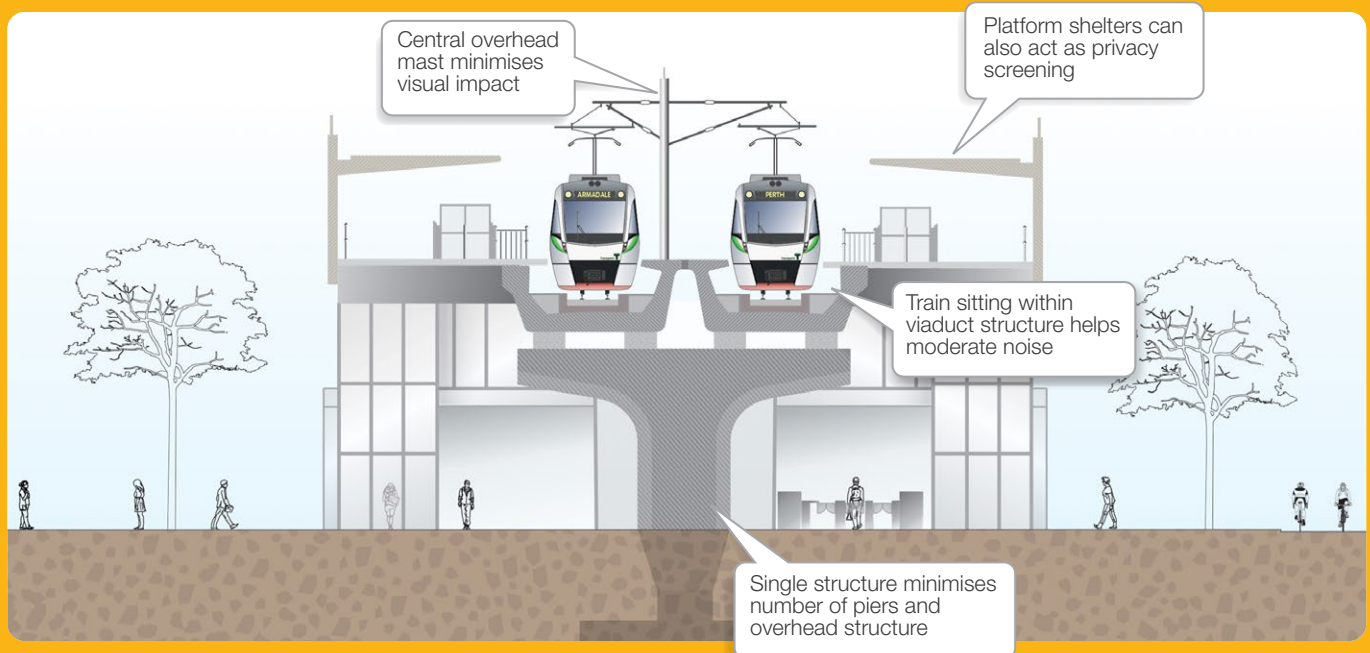
To do this we are:

- ▶ Providing a station entrance on either side of Oats Street
- ▶ Recommending space is available across the road from the TAFE as a place for students and the community to enjoy
- ▶ Locating the bus interchange underneath the elevated rail and closer to the industrial area to support safe connections



*Details are subject to final design and may change

What will elevated rail look like?



Example of a station cross-section – design concept only.

Station snapshot*

 **1** Zone fare (to Perth)

 **8** Bus stands

Platforms and access



Lifts and stairs
(future escalators)



Universal access



2 platforms



Toilets

- The elevated platforms will accommodate six-car trains with universal access to both platforms via lifts or stairs from ground level entry points either side of Oats Street.
- At least 70 per cent of the platform will be covered to provide protection from the elements.
- Future-proofing has also been considered to include gated entries and escalators when passenger demand increases in years to come.

Parking and cycling



100
Parking bays
(incl ACROD)



100
Bicycle spaces

- New Park 'n' Ride facilities will be available along with around 100 parking bays, new short-term parking options, a pick-up/drop-off area and a universally accessible taxi drop off zone.
- Cyclists will have approximately 100 bicycle spaces.

Safety and security



- Passive security measures will be implemented through best practice design, such as good lighting and an open station design that provides clear lines of sight to parking, the bus interchange and pedestrian paths.
- Like all stations on the Transperth network, the rebuilt Oats Street Station will be monitored in a variety of ways including transit officers, mobile patrols, a high-tech CCTV system and a 24-hour Central Monitoring Room.

Landscaping and public open space



- A dedicated public open space created by elevating the rail line will contribute new, quality recreational and community areas for Oats Street and surrounds.
- A 'green corridor' with tree canopy and extensive landscaping will provide shade, reduce urban heat and give the community a place to relax, exercise and gather for community events.

Bus interchange and bus station

- A bus interchange will be built next to the station entry to enable passengers to easily transfer between bus and rail services and connect with the urban rail network from locations such as Belmont Forum and Curtin University.



Join our
new project
group



*Details are subject to final design and may change

CONTACT US:

☎ 9326 3666
✉ info@metronet.wa.gov.au
🌐 metronet.wa.gov.au



 facebook.com/groups/victoriaparkcanning  twitter.com/metronetperth  [@metronet_perth](https://www.instagram.com/metronet_perth)

METRONET